

PowerBOX 3PE

PowerBOX 3PF

PowerBOX 3PG

QIG



QIG (Quick Installation Guide)





PowerBOX 3Px

LAN controlled power sockets by NETIO products
Each output is controlled independently
Open API & NETIO Cloud supported





Quick Installation Guide (QIG)

Thank you for purchasing a product of NETIO products a.s. Before using your product for the first time, please read this short guide to avoid problems with incorrect installation or use. For more information, please see the User's Manual available at <http://netio-products.com>.

Please read carefully the following notice.

The NETIO PowerBOX 3Px is an electrical device. Mishandling may damage the device, void your warranty, or result in injury or death.

Safety Notices

- 1) The manufacturer is not liable for any damage caused by incorrect use of the device or by operating it in an unsuitable environment.
- 2) The device is not rated for outdoor use.
- 3) Do not expose the device to strong vibrations.
- 4) Unauthorized modifications may damage the device or cause a fire.
- 5) Protect the device from liquids and excessive temperatures.
- 6) Make sure the device does not fall.
- 7) Only electrical appliances approved for use with the electrical network may be connected to the device.
- 8) Do not connect multiple devices in series.
- 9) The cable plug must be easily accessible.
- 10) The device is completely switched off only when unplugged.
- 11) If the device malfunctions, disconnect it from the electrical outlet and contact your vendor.
- 12) Do not cover the device.
- 13) Do not use the device if it appears to be mechanically damaged.
- 14) Make sure that the input and output cables are rated for the respective current.

Minimum system requirements

A device with an Internet browser (Firefox, Opera, Mozilla, Chrome etc.) that has JavaScript and Cookies support enabled.

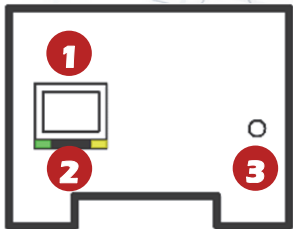


Package contents:

- NETIO PowerBOX 3Px device
- Quick Installation Guide (QIG)

Status / control indication

- 1) 1x RJ45 LAN connector
- 2) RJ45 LEDs – device states (yellow and green)
- 3) Multifunction “SETUP” button



LED and button functions

OUTPUT LEDs

RJ45 – green

Network Link (lit) + Activity (flashes)

RJ45 – yellow

1x flash when the device starts
3x flash when the internal system restarts

SETUP button

Switching all outputs

Output test:

Press the SETUP button **3x rapidly**.

- If any of output is On (1) -> Off (0).
- If all outputs are Off (0), All outputs -> On (1).

Restoring factory defaults

When powering on the device, hold the “SETUP” button pressed for about 10 seconds, until the yellow LED on the RJ45 jack flashes 3 times.

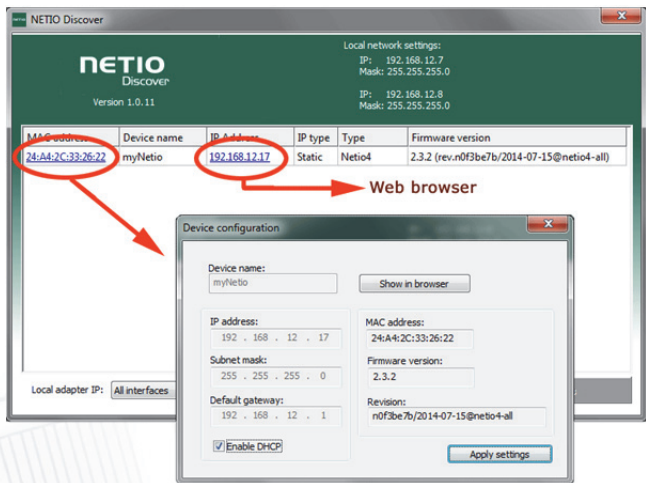


Before the first use

- 1) Connect your NETIO device to a LAN with a network cable (RJ45).
- 2) Connect the NETIO device to a mains electrical outlet with the power cable.
- 3) Wait about 1 minute until the device starts and receive IP address from DHCP server.

NETIO Discover

- 1) Find the **NETIO Discover** (MS Windows) utility at our website and install it.
- 2) NETIO Discover finds all NETIO devices on the network and displays them. **Click on the IP address to open the web interface.**
- 3) The displayed MAC address can be checked with the label on the device.



Note: A DHCP server is required for the first installation.
Fixed IP address, mask and GW can be defined via the device web.



WEB interface

The default username / password combination is **admin / admin**.

The screenshot shows the PowerBOX web interface in a browser window. The address bar shows the URL `192.168.13.30/#/outputs/1/general`. The interface has a sidebar with navigation links: **Outputs**, **M2M API**, **Protocols**, **Users**, **Settings**, and **Log**. The main content area displays three power outputs. **Power output 1** is selected, and its status is **ON**, which is circled in red. **Power output 2** is **OFF**, and **Power output 3** is **ON**. A red arrow points from the 'ON' toggle of Power output 1 to a red text box containing the text **Switch On / Off the output**. The right panel shows the configuration for the selected output, including fields for **Output name**, **Short ON/OFF delay**, **Output PowerUp state**, and **Output PowerUp interval**, along with a **Save Changes** button. The bottom of the interface includes links for the **Product manual** and **NETIO products a.s.**, and a version string `2.4.3 - 1.28(1.27) - 0 (4f443e2)`.



Specifications

Power	90-240 V; 50/60 Hz; 16 A - PowerBOX 3PE 90-240 V; 50/60 Hz; 16 A - PowerBOX 3PF 90-240 V; 50/60 Hz; 13 A - PowerBOX 3PG
Switched outputs	16 A in total / 16 A each output - PowerBOX 3PE 16 A in total / 16 A each output - PowerBOX 3PF 13 A in total / 13 A each output - PowerBOX 3PG
Fuse	Integrated, non-resettable
Internal consumption	Max 2 W
Output relay	Micro-disconnection (μ) (resistive load), SPST 1E5 switching cycles, max. 1.5 kV pulse voltage Switch heat and fire resistance class 1
Interfaces	1x Ethernet RJ-45 10/100 Mbit/s
Environment	IP30, protection rating = class 1 Operating temperature -20°C to +75°C Device rated for pollution degree 2. Permanent use in altitudes up to 2000 MASL (metres above sea level). Does not require additional cooling.



DECLARATION OF CONFORMITY

Manufacturer/Importer: NETIO products a.s.

Address: U Pily 3/103
143 00 Praha 4, Czech Republic

Product: **NETIO PowerBOX 3PE**
NETIO PowerBOX 3PF
NETIO PowerBOX 3PG

RTTED:

The product mentioned above to which this declaration relates is in conformity with the essential requirements and other relevant requirements of the R&TTE Directive (1999/5/EC).

LVD:

The product mentioned above to which this declaration relates is in conformity with the essential requirements and other relevant requirements of the Directive 2006/95/EC.

The product mentioned above is in conformity with the following standards and/or other normative documents:

EN 60950-1

EN 62368

RoHS:

The product mentioned above to which this declaration relates is in conformity with the essential requirements and other relevant requirements of the Directive 2011/65/EU (restriction of the use of certain hazardous substances in electrical and electronic equipment).

The product mentioned above is in conformity with the following standards and/or other normative documents:

EN 50581: 2012

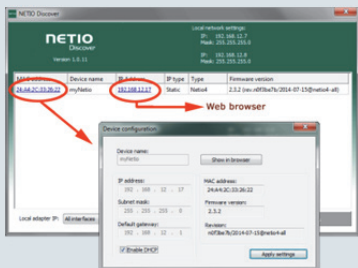
Czech Republic, Prague, February 26th, 2020

Jan Řehák, Chair of the board

Installation utility:

To find device on the LAN network Install the **NETIO Discover**.

On our website you can find



- **NETIO Discover** for MS Windows
- Discover in **NETIO Mobile 2** app for Android

Network mode

Cable

Default Web password

Default LAN

DHCP client

Username: “**admin**”, password: “**admin**”

Factory defaults

Power off the device.
Press and hold the SETUP button
Power On the device and hold the button (approx. 10 second) until the RJ45 Yellow LED 3 times blink.
Release the SETUP button

www.netio-products.com