

PowerPDU 4PS QIG



QIG (Quick Installation Guide)





PowerPDU 4PS – Quick Installation Guide (QIG)

Thank you for purchasing a product of NETIO products a.s. Before using your product for the first time, please read this short guide to avoid problems with incorrect installation or use. For more information, please see the User's Manual available at <http://netio-products.com>.

Please read carefully the following notice.

The NETIO PowerPDU 4PS is an electrical device. Mishandling may damage the device, void your warranty, or result in injury or death.

Safety Notices

- 1) The manufacturer is not liable for any damage caused by incorrect use of the device or by operating it in an unsuitable environment.
- 2) The device is not rated for outdoor use.
- 3) Do not expose the device to strong vibrations.
- 4) Unauthorized modifications may damage the device or cause a fire.
- 5) Protect the device from liquids and excessive temperatures.
- 6) Make sure the device does not fall.
- 7) Only electrical appliances approved for use with the electrical network may be connected to the device.
- 8) Do not connect multiple devices in series.
- 9) The cable plug must be easily accessible.
- 10) The device is completely switched off only when unplugged.
- 11) If the device malfunctions, disconnect it from the electrical outlet and contact your vendor.
- 12) Do not cover the device.
- 13) Do not use the device if it appears to be mechanically damaged.
- 14) Make sure that the input and output cables are rated for the respective current.

Minimum system requirements

A device with an Internet browser (Firefox, Opera, Mozilla, Chrome etc.) that has JavaScript and Cookies support enabled.



Package contents:

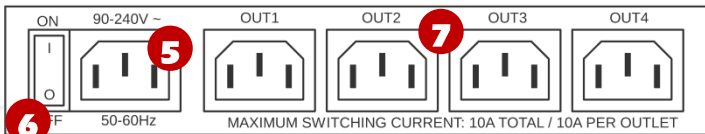
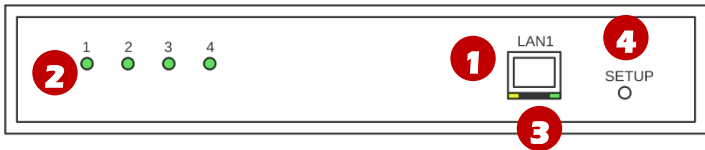
- NETIO PowerPDU 4PS
- Quick Installation Guide (QIG)
- Input power cable with a plug (cable type indicated on the box)

Front view

- 1) 1x RJ45 LAN jack
- 2) Output LEDs (lit green when the corresponding output is switched on)
- 3) RJ45 LEDs – device states (yellow and green)
- 4) Multifunction “SETUP” button

Rear view

- 5) IEC-320 C14 connector for the input power cable
- 6) Main switch
- 7) Switched sockets (IEC-320 C13)





LED and button functions

OUTPUT LEDs [1] to [4]

| | |
|----------------|--|
| Outputs 1 to 4 | OUTPUT [1, 2, 3, 4] is lit green when the output is switched on. |
| RJ45 – green | Network Link (lit) + Activity (flashes) |
| RJ45 – yellow | 1 x flash when the device starts 3x flash when the internal system restarts |
| | |

SETUP button

| | |
|----------------------------|--|
| Switching all outputs | Output test: Press the SETUP button 3x rapidly . – If an output is On (1), all outputs are switched off. – If all outputs are Off (0), they are all switched On (1). |
| Restoring factory defaults | When powering on the device, hold the “SETUP” button pressed for about 10 seconds, until the yellow LED on the RJ45 jack flashes 3 times. |



Before the first use

- 1) Connect your NETIO device to a LAN with a network cable (RJ45).
- 2) Connect the NETIO device to a mains electrical outlet with the power cable.
- 3) Switch the device on with the rocker switch on the back or on the side.
- 4) Wait about 1 minute until the device starts and receive IP address from DHCP server.

NETIO Discover

- 1) Find the **NETIO Discover** (MS Windows) utility at our website and install it.
- 2) NETIO Discover finds all NETIO devices on the network and displays them. **Click on the IP address to open the web interface.**
- 3) The displayed MAC address can be checked with the label on the device.

The screenshot shows the NETIO Discover utility interface. At the top, it displays 'NETIO Discover Version 1.0.11'. On the right, 'Local network settings' are shown: IP: 192.168.12.7, Mask: 255.255.255.0, and IP: 192.168.12.8, Mask: 255.255.255.0. Below this is a table of discovered devices:

| MAC address | Device name | IP Address | IP type | Type | Firmware version |
|-------------------|-------------|---------------|---------|--------|--|
| 24:A4:2C:33:26:22 | myNetio | 192.168.12.17 | Static | Netio4 | 2.3.2 (rev.n0f3be7b/2014-07-15@netio4-all) |

Red circles highlight the MAC address '24:A4:2C:33:26:22' and the IP address '192.168.12.17'. Red arrows point from these circles to a 'Device configuration' window and the text 'Web browser'. The 'Device configuration' window shows fields for Device name (myNetio), IP address (192.168.12.17), Subnet mask (255.255.255.0), Default gateway (192.168.12.1), and MAC address (24:A4:2C:33:26:22). It also includes a 'Show in browser' button, a 'Enable DHCP' checkbox (checked), and an 'Apply settings' button.

Note: A DHCP server is required for the first installation.
Fixed IP address, mask and GW can be defined via the device web.



WEB interface

The default username / password combination is **admin / admin**.

The screenshot shows the web interface for a PowerPDU device. The browser address bar displays `powerpdu-4ps.netio-products.com:22888/#/outputs/list`. The interface includes a sidebar with navigation options: **Outputs**, M2M API Protocols, Cloud, Users, Schedules, Settings, and Log. The main content area lists four power outputs:

- Power output 1:** Status is **ON** (indicated by a green toggle switch).
- Power output 2:** Status is **OFF** (indicated by a white toggle switch).
- Power output 3:** Status is **OFF** (indicated by a white toggle switch).
- Power output 4:** Status is **OFF** (indicated by a white toggle switch).

A red circle highlights the 'ON' toggle for Power output 1, with a red arrow pointing to the text: *Click here to change the Output state*.

At the bottom of the interface, there are links for [Product manual](#), [NETIO products a.s.](#), and version information: 3.0.1 - 1.31(1.26) - 0 (bf21720).



Specifications

| | |
|-------------------------------|---|
| Power | 90–240 V; 50/60 Hz; 10 A |
| Switched outputs | 10 A total / 10 A per output |
| Maximum line breaker capacity | C16A |
| Fuse | Integrated, non-resettable |
| Internal consumption | Max 3 W |
| Output relay | Micro-disconnection (μ) (resistive load), SPST 1E5 switching cycles, max. 1.5 kV pulse voltage Switch heat and fire resistance class 1 |
| Digital Input (DI) | 1x Dry contact input (DI) Aux. DC power 12V/0,12A max (+12V, GND) |
| NETIO 4PS interfaces | 1x Ethernet RJ-45 10/100 Mbit/s Attention! Device connected over LAN must be connected in network with same earth potential (PE). |
| Environment | IP30, protection rating = class 1 Operating temperature -20°C to +65°C Device rated for pollution degree 2. Designed for continuous operation in altitudes up to 2000 m. Does not require additional cooling. |

**NETIO**

DECLARATION OF CONFORMITY

Manufacturer/Importer: NETIO products a.s.
Address: U Pily 3/103
143 00 Praha 4, Czech Republic
Product: **PowerPDU 4PS**

RTED:

The product mentioned above to which this declaration relates is in conformity with the essential requirements and other relevant requirements of the R&TTE Directive (1999/5/EC).

The product mentioned above is in conformity with the following standards and/or other normative documents:

EN 55011, ed.3:2010
EN 61326-1, ed.2:2013

LVD:

The product mentioned above to which this declaration relates is in conformity with the essential requirements and other relevant requirements of the Directive 2006/95/EC.

The product mentioned above is in conformity with the following standards and/or other normative documents:

EN 61010-1, ed.2:2011

RoHS:

The product mentioned above to which this declaration relates is in conformity with the essential requirements and other relevant requirements of the Directive 2011/65/EU (restriction of the use of certain hazardous substances in electrical and electronic equipment).

The product mentioned above is in conformity with the following standards and/or other normative documents:

EN 50581: 2012

Czech Republic, Prague, December, 20, 2019

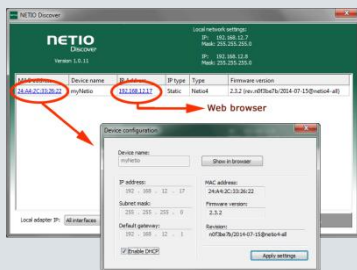
Jan Řehák, Chair of the board

Installation utility:

To find device on the LAN network Install please the **NETIO Discover**.

On our website you can find

- **Discover** for MS Windows
- **Discover** JAVA version



| | |
|----------------------|---|
| Network mode | Default LAN |
| Cable | DHCP client / Static IP 192.168.1.78 |
| Default Web password | Username: “admin” , password: “admin” |

| | |
|------------------|---|
| Factory defaults | Power off the device. Press and hold the SETUP button Power On the device and hold the button (approx. 10 second) until the RJ45 Yellow LED 3 times blink. Release the SETUP button. |
|------------------|---|

www.netio-products.com