

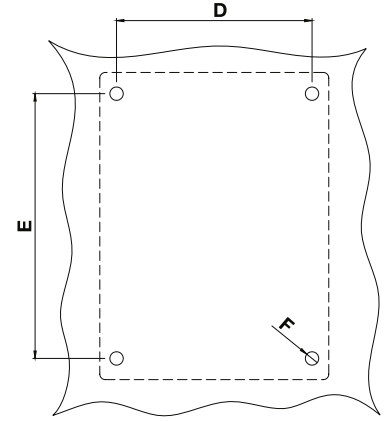
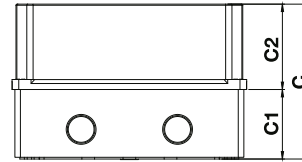
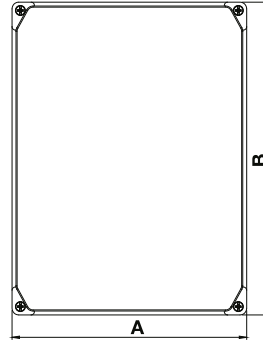
### Özel üretim termoplastik buatlar

Special examples for outdoor thermoplastic enclosures



- **Isıya dayanım seviyesi is V2.**  
Heat resistance level is V2.
- **IEC 60309-1 ve IEC 60695-2-1 uygundur.**  
It qualified by IEC 60309-1 and IEC 60695-2-1 standards.
- **kullanım sıcaklığı en az -25 °C ve en fazla +60 °C olur.**  
Installation temprature in minime is -25 °C and in maximum is +60 °C.

## Termoplastik Buatlar Teknik Detaylar Thermoplastic Enclosures Technical Details



Duvara Montaj Ölçüleri

Ref. Code		Dış / External					İç / Internal			Duvar Montaj Wall Mounting		
Opak Kapak Opaque Cover	Şeffaf Kapak Transparent Cover	A	B	C	C1	C2	A	B	C	D	E	F
380.041.100	-	88	88	46.5	40.5	6	80	80	42	55	-	10
400.055.200	400.055.205	95	95	55	49,5	5.5	86.5	86.5	49	99	-	4
400.120.310	400.120.315	113	113	125	58	67	109	109	119	78	78	12
400.073.300	400.073.305	117	117	76	58	18	108.5	108.5	70	78	78	12
400.073.400	400.073.405	117	213	76	58	18	108.5	205	70	78	174	12
400.120.410	400.120.415	117	213	125	55	70	108.5	205	120	78	174	12
400.085.420	400.085.425	130	245	84	62	22	125	240	77.5	85	195	12
400.140.420	400.140.425	130	245	140	62	78	125	240	132.5	85	195	12
400.100.500	400.100.505	210	280	103	62	41	200	270	97	175	237	12
400.135.600	400.135.605	210	280	138.5	62	76.5	200	270	129.5	175	237	12
400.115.500	400.115.505	265	355	123	74	48	253	343	115	198	318	12
400.155.600	400.155.605	265	355	158	74	83	253	343	150	198	318	12
400.150.700	400.150.705	265	355	153	105	48	253	343	146	198	318	12
400.185.700	400.185.705	265	355	186	103	83	253	343	179	198	318	12

## Termoplastik Buatlar / Thermoplastic Enclosures



### Opak kapaklı termoplastik buatlar (Halojen Gazı İçermez) Opaque cover thermoplastic enclosures ( Halojen Free)



400.073.300



300.135.600

Ref. Code		Dış Ölçüler External Dimension		 gr.
IP44	IP67			
<b>380.041.100</b>	-	88 x 88 x 46.5	24	71
<b>300.055.200</b>	<b>400.055.200</b>	95 x 95 x 55	6	00
<b>300.120.310</b>	<b>400.120.310</b>	113 x 113 x 125	6	177
<b>300.073.300</b>	<b>400.073.300</b>	117 x 117 x 76	12	157
<b>300.073.400</b>	<b>400.073.400</b>	117 x 213 x 76	6	272
<b>300.120.410</b>	<b>400.120.410</b>	117 x 213 x 125	3	354
<b>300.085.420</b>	<b>400.085.420</b>	130 x 245 x 85	2	368
<b>300.140.420</b>	<b>400.140.420</b>	130 x 245 x 140	2	458
<b>300.100.500</b>	<b>400.100.500</b>	210 x 280 x 103	1	719
<b>300.135.600</b>	<b>400.135.600</b>	210 x 280 x 138.5	1	861
<b>300.115.500</b>	<b>400.115.500</b>	265 x 355 x 123	1	1102
<b>300.155.600</b>	<b>400.155.600</b>	265 x 355 x 158	1	1192
<b>300.150.700</b>	<b>400.150.700</b>	265 x 355 x 153	1	1180
<b>300.185.700</b>	<b>400.185.700</b>	265 x 355 x 186	1	1270



### Şeffaf kapaklı termoplastik buatlar (Halojen Free) Transparent cover thermoplastic enclosures ( Halojen Free)



300.100.505



300.135.600

Ref. Code		Dış Ölçüler External Dimension		 gr.
IP44	IP67			
<b>300.055.205</b>	<b>400.055.205</b>	95 x 95 x 55	6	00
<b>300.120.315</b>	<b>400.120.315</b>	113 x 113 x 125	6	188
<b>300.073.305</b>	<b>400.073.305</b>	117 x 117 x 76	12	168
<b>300.073.405</b>	<b>400.073.405</b>	117 x 213 x 76	6	276
<b>300.120.415</b>	<b>400.120.415</b>	117 x 213 x 125	3	379
<b>300.085.425</b>	<b>400.085.425</b>	130 x 245 x 85	2	000
<b>300.140.425</b>	<b>400.140.425</b>	130 x 245 x 140	2	487
<b>300.100.505</b>	<b>400.100.505</b>	210 x 280 x 103	1	758
<b>300.135.605</b>	<b>400.135.605</b>	210 x 280 x 138.5	1	895
<b>300.115.505</b>	<b>400.115.505</b>	265 x 355 x 123	1	1182
<b>300.155.605</b>	<b>400.155.605</b>	265 x 355 x 158	1	1287
<b>300.150.705</b>	<b>400.150.705</b>	265 x 355 x 153	1	1260
<b>300.185.705</b>	<b>400.185.705</b>	265 x 355 x 186	1	1365